

Taft Stettinius & Hollister LLP

Directions to Cincinnati Office

I-75 South:

Travel southbound on I-75. Take the 5th Street exit on the left. West 5th Street becomes 5th Street East. After crossing Vine Street, turn right on Walnut Street, then turn right on 4th Street, then right again on Vine Street and stay in the right lane (our building is on the right). After crossing 5th Street, turn right into the Fountain Square parking garage.*

I-71 South:

Travel southbound on I-71. Merge to the far left lane as you approach Cincinnati. This lane becomes the Downtown/Riverfront/3rd Street exit. After you go through the tunnel, stay in the center lane as you travel west on 3rd Street. Proceed 5 blocks. Move to the far right lane after crossing Walnut Street. Turn right on Vine Street and stay in the right lane (our building is on the right). After crossing 5th Street, turn right into the Fountain Square parking garage.*

I-74 East:

Take I-74 East and merge onto I-75 South toward Lexington. Take the 5th Street exit on the left and merge onto 5th Street East. After crossing Vine Street, turn right on Walnut Street, then turn right on 4th Street, then right again on Vine Street and stay in the right lane (our building is on the right). After crossing 5th Street, turn right into the Fountain Square parking garage.*

Columbia Parkway:

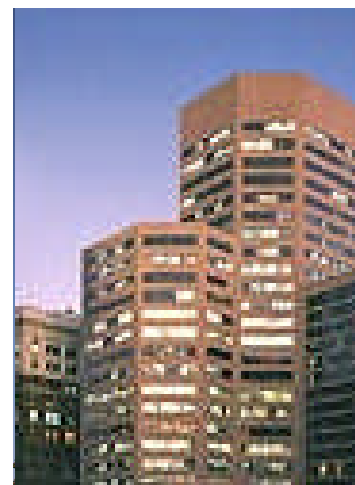
Follow Columbia Parkway to 6th Street East. Turn left onto Walnut Street. Turn right onto 4th Street, then right onto Vine Street, staying in the right lane (our building is on the right). After crossing 5th Street, turn right into the Fountain Square parking garage.*

I-71/I-75 North:

Take I-71 N/I-75 N into Ohio. Immediately after crossing the river, merge onto I-71 N and take the 2nd Street Exit. Proceed Four blocks East and turn left on Vine Street. After crossing 5th Street, stay in the right lane and turn right into the Fountain Square parking garage.*

I-471 North:

Take I-471 N across the bridge and take the 6th Street exit toward downtown. Stay straight to go onto 6th Street East. Turn left onto Walnut Street. Turn right onto 4th Street, then right onto Vine Street, staying in the right lane. After crossing 5th Street, stay in the right lane and turn right into the Fountain Square parking garage.*



Address:

Taft Stettinius & Hollister LLP
425 Walnut St., Suite 1800
Cincinnati, OH 45202

Phone:

(513) 381-2838

Location:

Taft Stettinius & Hollister LLP is located on the 18th floor of the U.S. Bank Building on the corner of 5th and Walnut Street across from the Fountain Square parking garage.

Other Parking Options

Chemed Center Garage

430 Main Street

Chiquita Center Garage

250 East 5th Street

Center at 600 Vine Garage

Enter from Vine St. (Northbound) between 6th & 7th Streets

Fountain Square Garage (Under Fountain Square)

Enter from Vine St. (Northbound) between 5th & 6th Streets

Fountain Square South Garage – Westin Hotel

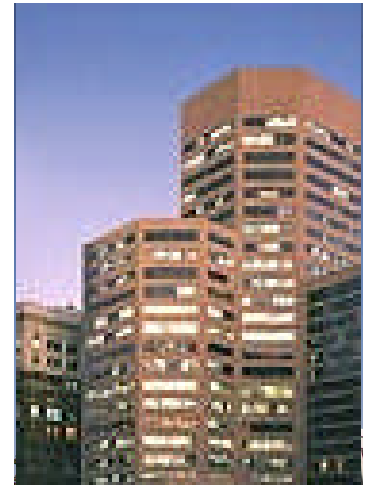
Enter from Vine St. (Northbound) between 4th & 5th Streets

580 Walnut Garage

580 Walnut Street

Mabley Place Garage

Enter from 4th St. (Westbound) between Race & Elm Streets or from Elm St. (Northbound) between 4th & 5th Streets.*



Address:

Taft Stettinius & Hollister LLP
425 Walnut St., Suite 1800
Cincinnati, OH 45202

Phone:

(513) 381-2838

Location:

Taft Stettinius & Hollister LLP is located on the 18th floor of the U.S. Bank Building on the corner of 5th and Walnut Street across from the Fountain Square parking garage.